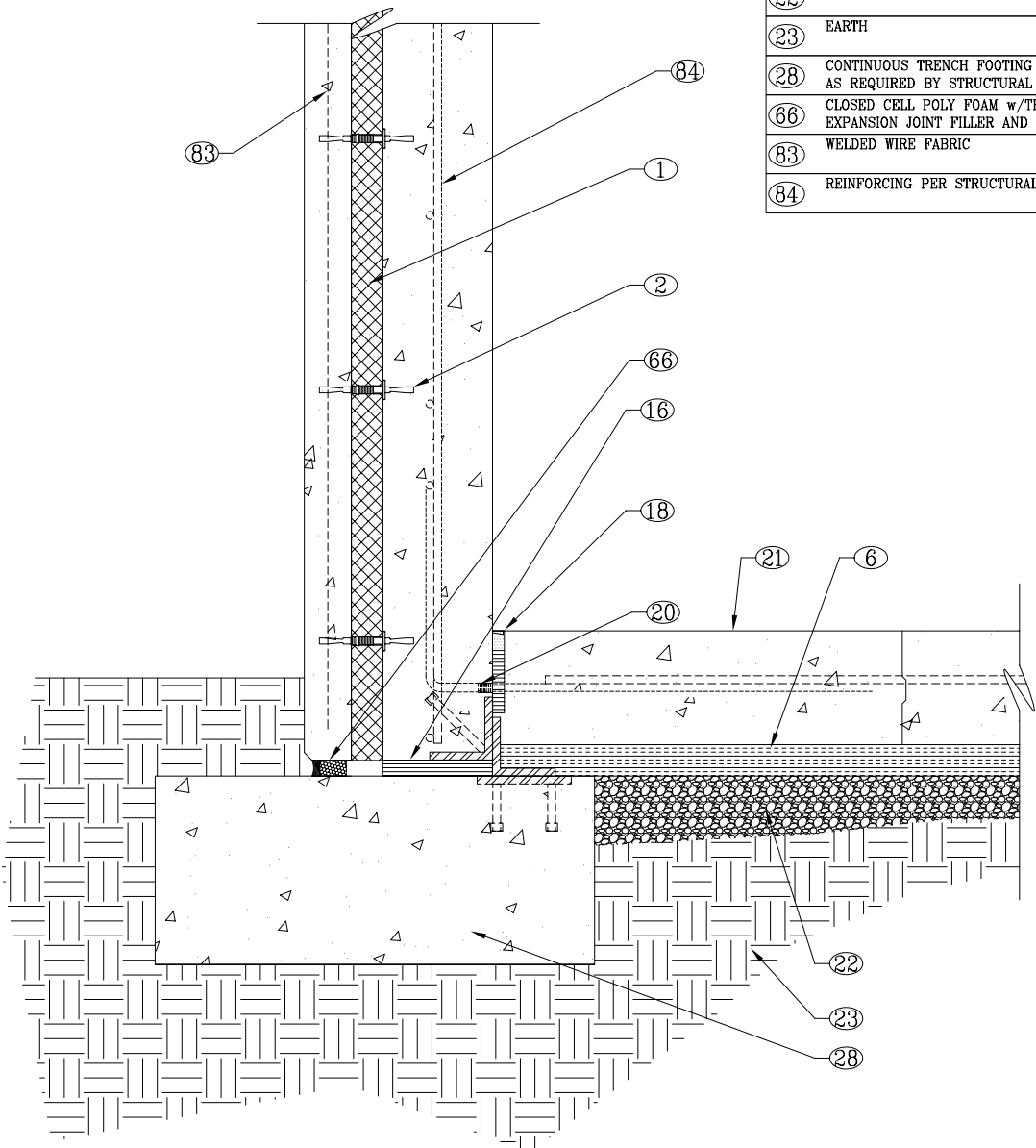


①	STYROFOAM INSULATION AS PROVIDED WITH THE THERMOMASS SYSTEM
②	THERMOMASS FIBER COMPOSITE CONNECTOR @ 16" O.C.
⑥	INSULATION PROVIDED BY OTHERS
①6	SHIM AND GROUT AS REQUIRED
①8	EXPANSION JOINT WITH GROUT FILL
②0	COIL ROD AND INSERT
②1	SLAB ON GRADE
②2	COMPACTED FILL
②3	EARTH
②8	CONTINUOUS TRENCH FOOTING DESIGNED AND REINFORCED AS REQUIRED BY STRUCTURAL ENGINEER
⑥6	CLOSED CELL POLY FOAM w/TEAR-OFF STRIP OR OTHER EXPANSION JOINT FILLER AND CAULK AS NEEDED
⑧3	WELDED WIRE FABRIC
⑧4	REINFORCING PER STRUCTURAL ENGINEER



CONSTRUCTION DOCUMENTS BASED ON DETAILS PROVIDED BY COMPOSITE TECHNOLOGIES CORPORATION WILL VARY ACCORDING TO PROJECT DEMANDS. REFER TO THE PROJECT ARCHITECT OR ENGINEER FOR SPECIFIC DETAILS.

COPYRIGHT 2003 COMPOSITE TECHNOLOGIES CORPORATION  
 THIS DRAWING IS THE EXCLUSIVE PROPERTY OF CTC.  
 ANY REPRODUCTION, COPY, OR OTHER UNAUTHORIZED USE OF  
 THIS DRAWING, INCLUDING BUT NOT LIMITED TO USE OF THIS  
 DRAWING IN THE INSTALLATION OF A NON-CTC INSULATION SYSTEM,  
 IS A VIOLATION OF U.S. COPYRIGHT LAWS AND OTHER RIGHTS OF CTC.  
 Composite Technologies Corporation  
 1000 Technology Drive, Boone, IA 50036  
 Wats: (800) 232-1748; Ph: (515) 433-6075; Fax: (515) 433-6088  
 Email: info@thermomass.com

PROJECT:	<b>GENERAL DETAIL FILE</b>	
DETAIL:	<b>FOUNDATION CONNECTION TYPICAL</b>	
SCALE:	<b>1"=1'-0"</b>	
DRAWN BY:	<b>TIM</b>	CHECKED BY: <b>DXN</b>
DATE:	<b>04/16/03</b>	REVISION: <b>08/15/03</b>

CONFIGURATION:	<b>3"2"17"</b>
PROJECT NO.:	
DRWG. NO.:	<b>PC2-F50</b>

